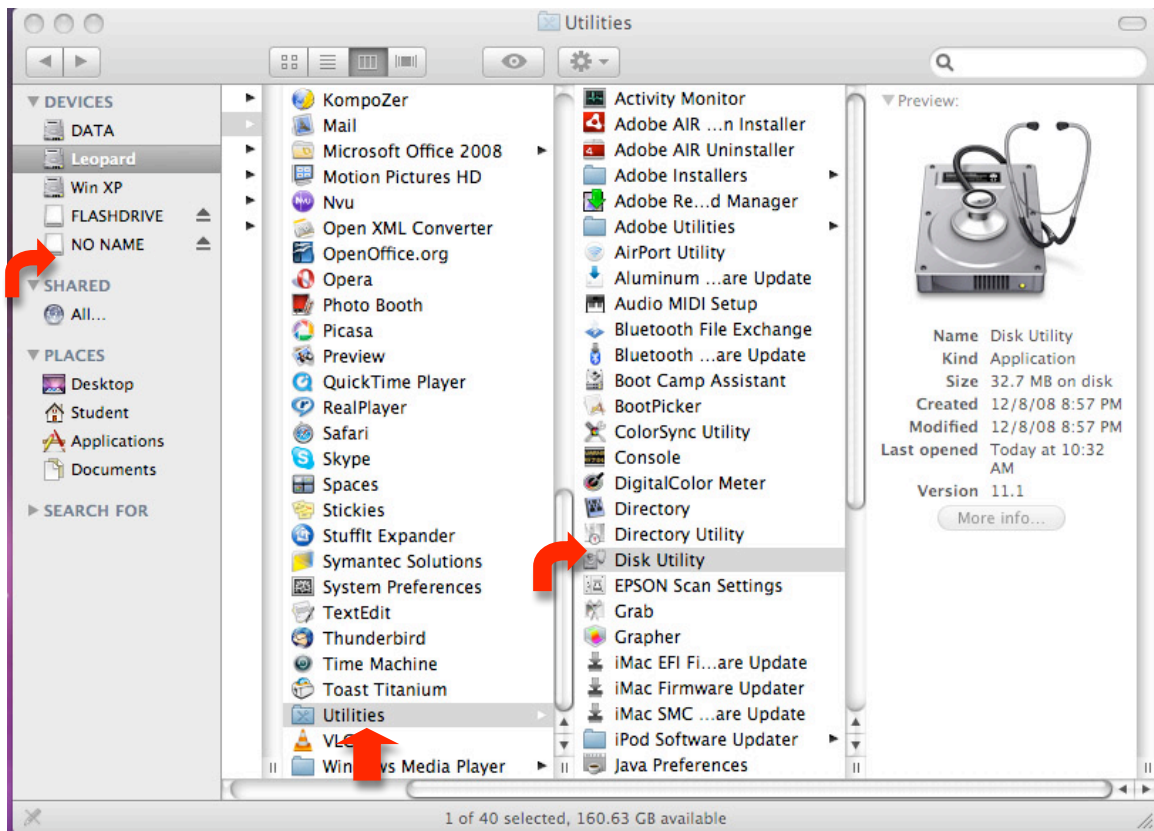


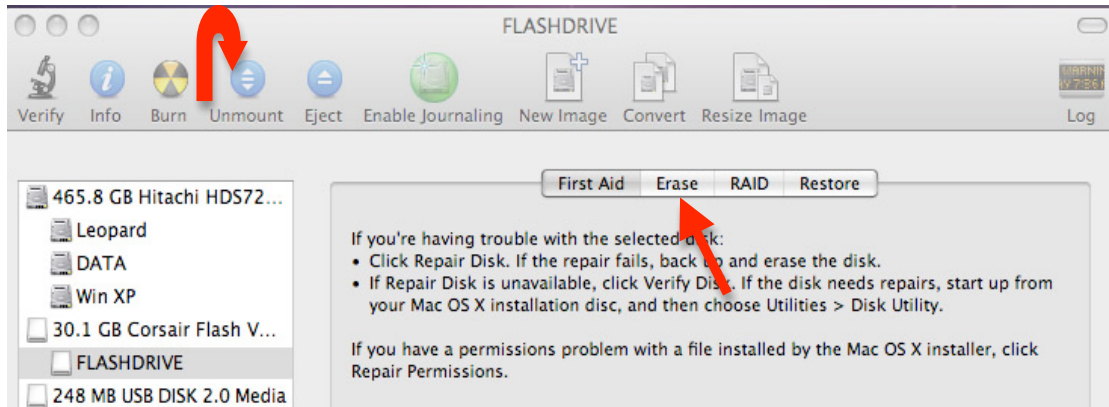
**HOW TO FORMAT A LARGE CAPACITY FLASH DRIVE ON AN iMAC, SO THAT IT CAN BE USED ON A MAC OR WINDOWS PLATFORM.**

**If you have files saved on your drive, you must “back up” your drive first. Move all data from your flash drive to Data drive and make sure there isn’t anything open that was in the flash drive.**

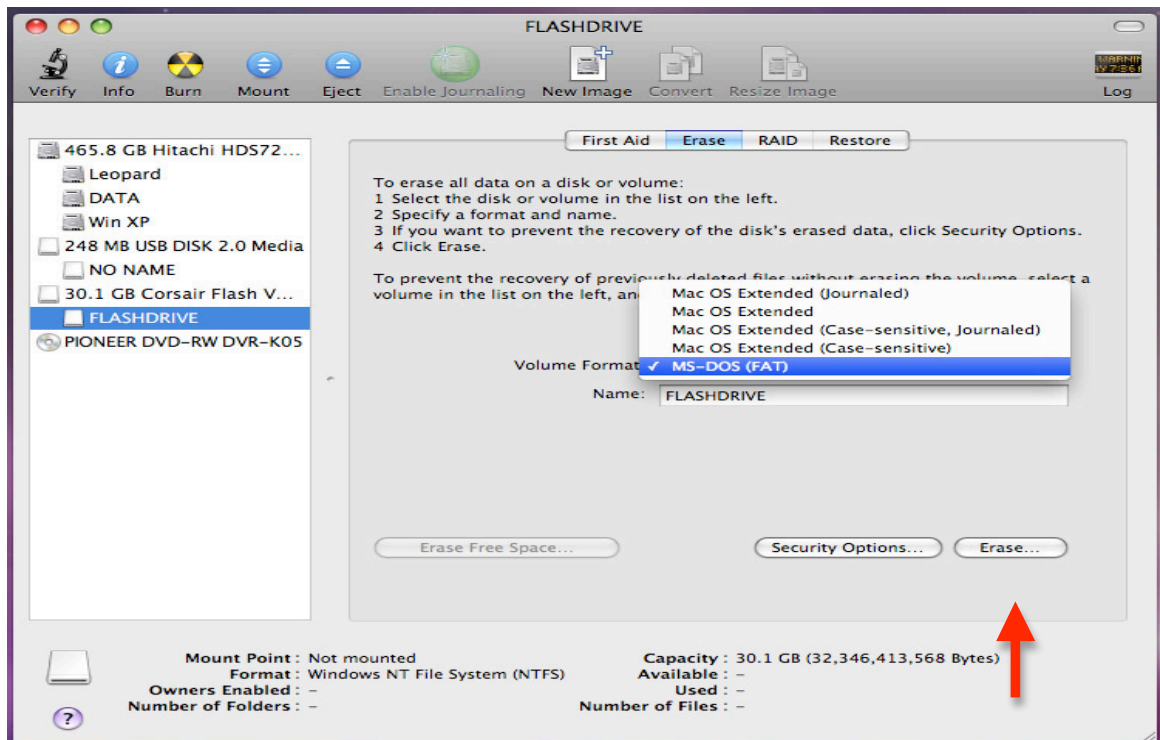
1. Double click “Snow Leopard” drive on desktop.
2. Click on “Applications.”
3. Click on “Utilities.”
4. Double click on “Disk Utility.”



5. Click on the flash drive icon in the left panel.
6. Click on the “Unmount” icon in the upper part of screen.



7. Click on the “Erase” button in the upper part of screen.
8. Click on the down arrow next to “Volume Format” to choose MS-DOS (FAT).



9. Click on the Erase button in the lower right-hand corner.
10. Close Disk Utility window.
11. Move all files back to your flash drive.

**Please note: If your flash drive is formatted with “HFS – OS Extended Journal,” a Windows computer will not be able to read it.**