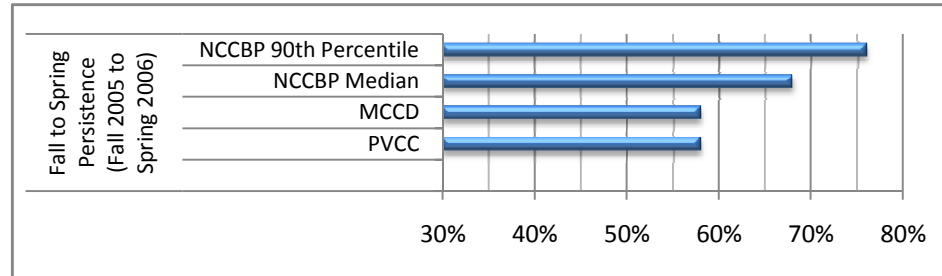


iStartSmart Evaluation and Assessment Plan Benchmarks for Student Success Measures

Fall to Spring Persistence	p.2
Fall to Fall Persistence	p.2
Course Passing Rates - Developmental Math	p.3
Course Passing Rates - Developmental Writing	p.3
Course Passing Rates - Developmental Reading	p.3
Course Passing Rates - College Level Courses	p.3
Completed Degree/Certificate within 3 years - Full-Time in first semester	p.4
Completed Degree/Certificate within 3 years - Part-Time in first semester	p.4

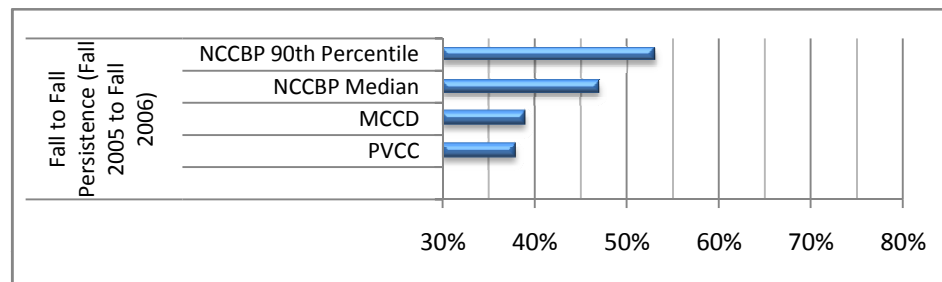
Fall to Spring Persistence (Fall 2005 to Spring 2006)

PVCC	58%
MCCD	58%
NCCBP Median	68%
<i>NCCBP 90th Percentile</i>	76%



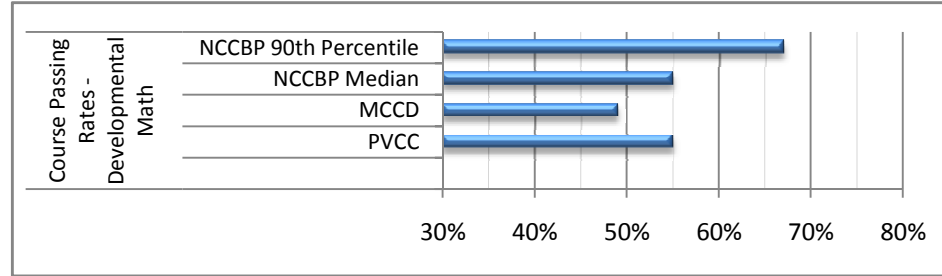
Fall to Fall Persistence (Fall 2005 to Fall 2006)

PVCC	38%
MCCD	39%
NCCBP Median	47%
<i>NCCBP 90th Percentile</i>	53%



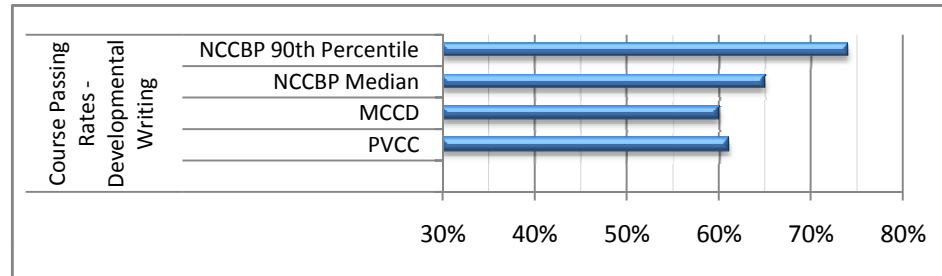
Course Passing Rates - Developmental Math

PVCC	55%
MCCD	49%
NCCBP Median	55%
<i>NCCBP 90th Percentile</i>	67%



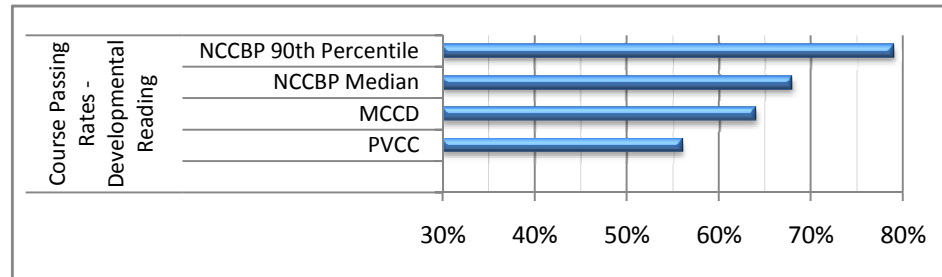
Course Passing Rates - Developmental Writing

PVCC	61%
MCCD	60%
NCCBP Median	65%
<i>NCCBP 90th Percentile</i>	74%



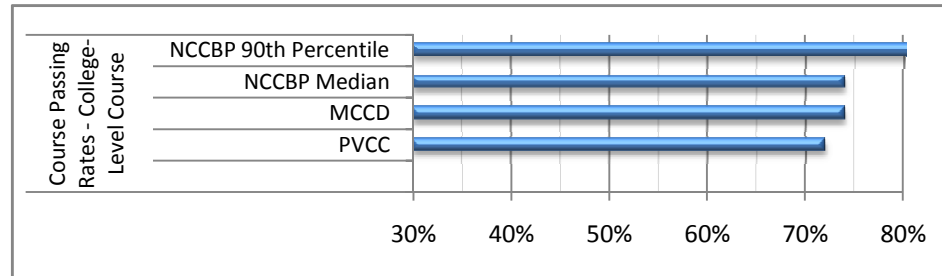
Course Passing Rates - Developmental Reading

PVCC	56%
MCCD	64%
NCCBP Median	68%
<i>NCCBP 90th Percentile</i>	79%

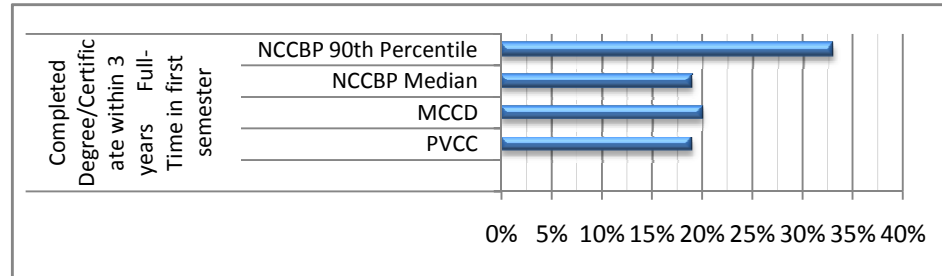


Course Passing Rates - College-Level Course

PVCC	72%
MCCD	74%
NCCBP Median	74%
<i>NCCBP 90th Percentile</i>	81%



<u>Completed Degree/Certificate within 3 years</u>	<u>Full-</u>
<u>Time in first semester</u>	
PVCC	19%
MCCD	20%
NCCBP Median	19%
<i>NCCBP 90th Percentile</i>	33%



<u>Completed Degree/Certificate within 3 years</u>	
<u>Part-Time in first semester</u>	
PVCC	9%
MCCD	9%
NCCBP Median	6%
<i>NCCBP 90th Percentile</i>	13%

